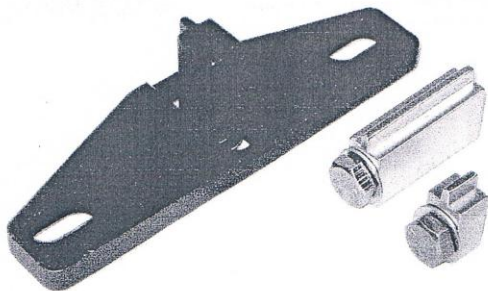


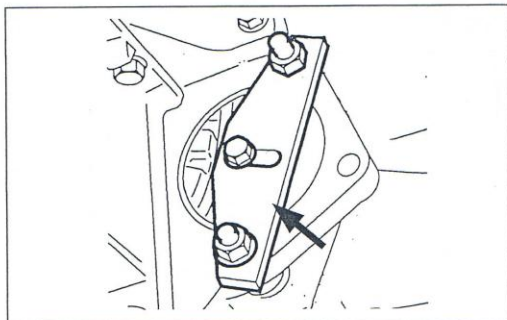
Product Information



AST4834 Flywheel Locking Tool Set



IMPORTANT: Always refer to the vehicle manufacturer's service instructions, or proprietary manual, to establish the current procedures and data. Product Information Sets detail applications and use of the tools with any general instructions provided as a guide only.



AST4834 Flywheel Locking Tool Set includes a Main Plate and 3 x inter-changeable Adaptors.

Each Adaptor comes complete with securing bolt for attaching to the Main Plate to make up 3 different configurations – "Tool Assemblies".

Select the appropriate Adaptor. Fix it to the Main Plate with bolt, finger tight only.

Remove the starter motor and fix the "Tool Assembly" securely, in place of the starter motor.

Slide the Adaptor in to the teeth of the flywheel and secure the Adaptor in place by tightening the bolt.

Applications:

FORD 1.8/2.0 Diesel and 1.6Ti-VCT Petrol engines

To 'lock' flywheel/crankshaft in 'timed' position and to counter-hold crankshaft when releasing/tightening crankshaft pulley bolts.

FORD

1.8 TDi/TDdi/TDCi diesel engines (Belt) – Adaptor "A"

Fiesta/Courier Focus/C-Max Tourneo Connect
Mondeo S-Max Galaxy
Transit Connect

RTN, RTQ, RTP, BHDB, BHPA, C9DA, C9DB, C9DC, F9DA, F9DB, FFBA, FFDA, FFWA, HPCA, HPCB, P7PA, P9PA, QYBA, QYWA, R2PA, R3PA, RWPA, KKDA,

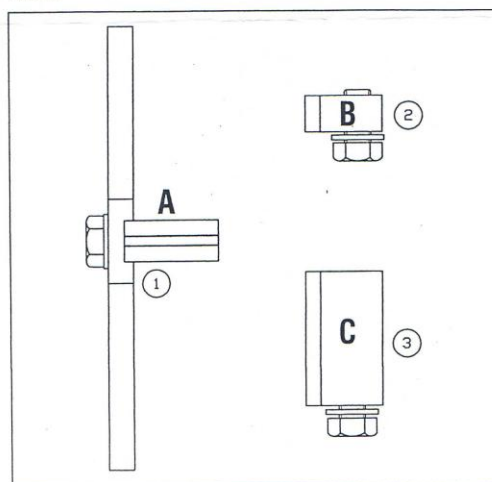
2.0TDCi diesel engines (Belt) – Adaptor "B"

Focus/C-Max S-Max Galaxy

AZWA, G6DA, G6DB, G6DC, QXWA

1.6Ti-VCT petrol engines (Belt) – Adaptor "C"

Focus Focus C-Max Mondeo
HXDA



Set Contents

Item	Part Number	Description
1	AST4407	Flywheel Locking Tool (Main Plate with Adaptor "A")
2	AST4834-1	Adaptor ("B")
3	AST4834-2	Adaptor ("C")